

OR-2513 UV (Ricoh G5/G6)

High speed multi-function maglev Flatbed UV printer



Maglev/white color simultaneous output/high accuracy/widely used



Technical features

3xG5 (CMYK+W) :

4pass	18 sqm/h
6pass	12 sqm/h

3xG6 (CMYK+W) :

4pass	24 sqm/h
6pass	16 sqm/h

(Add heads to increase speed)

- Y-direction double screw transmission ensures higher output accuracy and working stability;
- The appearance of metal baking paint has high mechanical strength and stable operation;
- Large gantry milling frame, precision milling of X and Y axes to improve equipment printing accuracy;
- Adopting Ricoh G5/G6 head configuration to improve printing speed and accuracy;
- Compared to traditional printing, UV flatbed printing does not require plate making or color matching, greatly reducing manpower and material resources, and supporting small batch and multi batch printing;

Head configuration

Ricoh G6 has higher production capacity and faster printing speed. Adopting a new variable ink droplet technology to achieve three-level dot changing, it can provide 5PL ink dot size and easily achieve perfect image quality even at high speed or low resolution, reducing the graininess of image quality and outputting high image quality with high precision!

3-16 head configuration supports multiple printing modes:

CMYK / CMYK+W / CMYK+W+CMYK / CMYK+W+V / CMYK+Lc+Lm+W

Diversified head combination methods

The OR-2513 flatbed printer car is equipped with multiple heads installation slots on the floor (supporting 3-16 configurations), enabling multiple combination printing modes and multiple printing processes; And it has extremely high precision while meeting customer production requirements.



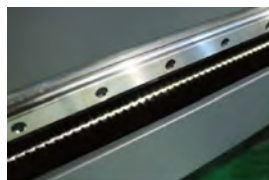
Using a negative pressure ink supply unit, the ink flows more smoothly during operation and the heads lasts longer



High resilience brand drag chain, with regular routing, provides better printing support for the movement of the front of the car



Automatic height measurement system, precise positioning, high-quality printing



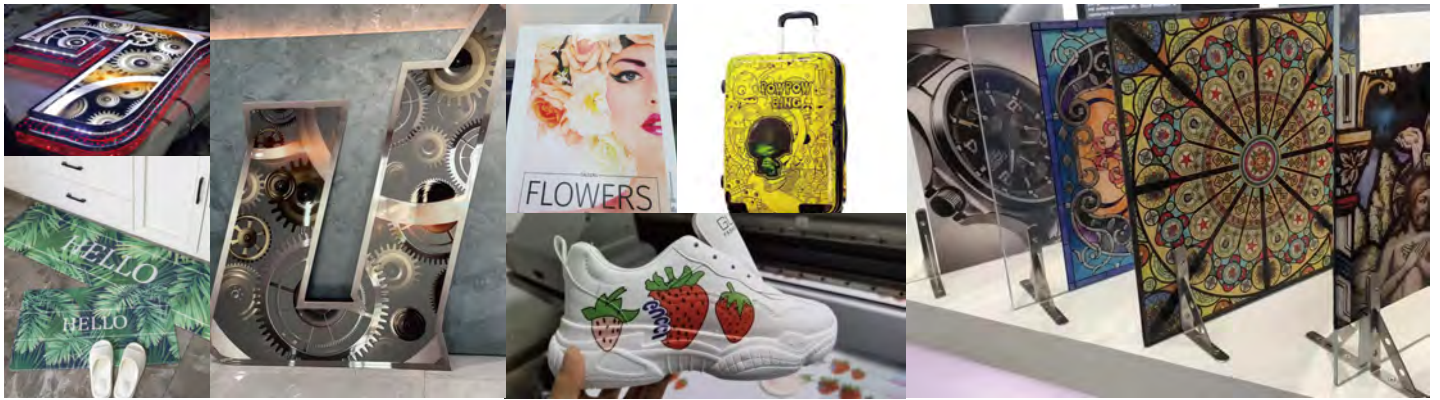
Double screw transmission improves ink accuracy, is resistant to grinding, has high precision, and has stable performance



maglev can carry higher motion speeds, higher precision, lower sound, and faster operating speeds. High quality THK silent dual rail, stable printing process, reduces noise



Partition adjustable suction platform control provides strong stability for item printing, ensuring accurate positioning and printing of items



It is widely used, such as glass, metal, ceramic tile, acrylic acid, plexiglass, wood, plastic, aluminum, cardboard, foam board, composite board, plywood, PVC, MDF, WPC, ABS, PP board, etc; Sheet materials: fabric, canvas, leather, vinyl, paper, etc

SPECIFICATIONS				
Model		OR-2513 UV		
Print Head		G5	G6	
Printing Technology		Gray scale micro piezoelectric inkjet technology		
Printing format		2500x1300mm		
Printing accuracy		600dpi,900dpi,1200dpi,1800dpi,2400dpi		
Head Number		Optional 3-16 print heads		
RIP		Photoprint / Riin		
Ink	type	UV INK		
	color	CMYK / Lc / Lm / W / V		
Printing thickness		1-150mm		
Color Control		It conforms to the international standard ICC color control, with curve and density adjustment functions.		
Interface		USB 3.0		
Printing speed		G5x3 (CMYK+W)	G6x3 (CMYK+W)	Add heads Increase speed
	4pass	18 sqm/h	24 sqm/h	
	6pass	12 sqm/h	16 sqm/h	
	8pass	9 sqm/h	12 sqm/h	
Power Supply		AC220V(± 10%),50/60Hz		
Environment		Temperature: 18℃-29℃		
		Humidity: 50%-80%		
Power		working condition : 5000W Sleep state: 600W		
Machine size / weight		4430 × 2162 × 1488 mm / 1800 kg		

NANJING ORIC CO.,LTD

Website: www.oricsystems.com / Email: marketing@oricsystems.com






 @ORIC Manufactory

